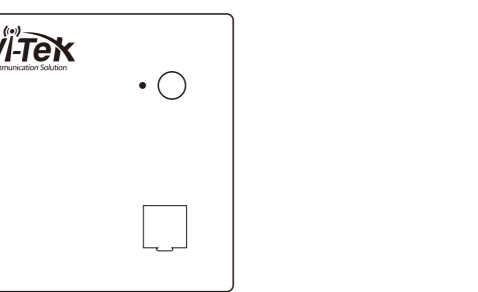


Quick Installation Guide

Cloud Managed In-wall Wireless Access Point

WI-AP416

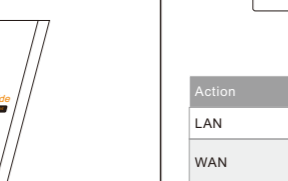
Package Contents



1 x WI-AP416



2 x Screw



1 x Quick Installation Guide

Interface and Indicators

LED Indicator Instructions



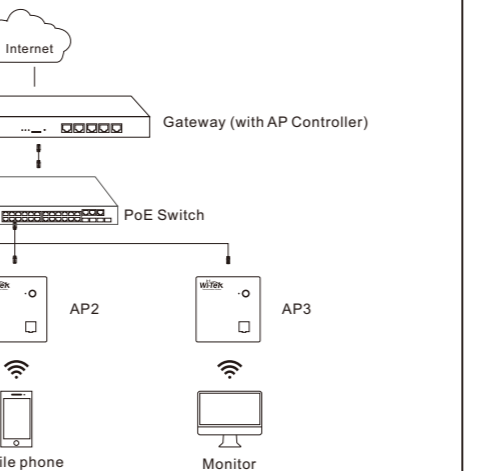
Name	Status	Description
System LED Light	LED light blinking	System is starting
	LED light is always on	System started successfully
	LED lights Off	Working abnormally/Power off/LED is turned off.

Ports Instructions



Action	Description
LAN	LAN port which can connect LAN device.
WAN	The port is used to connect to the PoE switch, for both data transmission and Power over Ethernet (PoE) through an Ethernet cable.
Reset	With the device powered on, press and hold the reset button for about 8 seconds, then release the button. The device will restore to factory default settings.

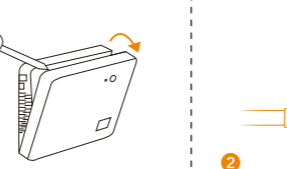
Typical Connection



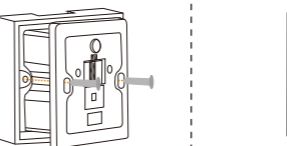
Device Installation

Wall Plate Installation

Detach the faceplate of the AP with a screwdriver.



Insert the enclosed screws and tighten them with a screwdriver to secure the mounting bracket.



Connect the Ethernet cable inside the junction box to an RJ45 plug.



Press the faceplate of the AP back into position.

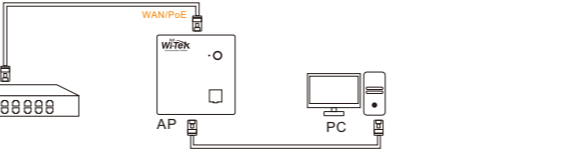


Configuration Method

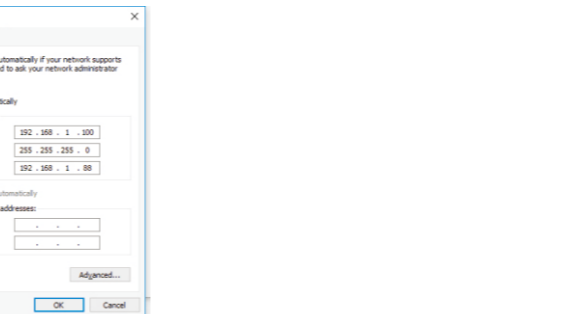
Method 1. Connect computer to the wireless signal of AP, the default SSID is "WI-TEK xxxx". Password is 88888888



Method 2. Connect computer to the AP by Ethernet cable.



Step 1. On the computer, please set the static IP under the same subnet with AP, 192.168.1.xx.

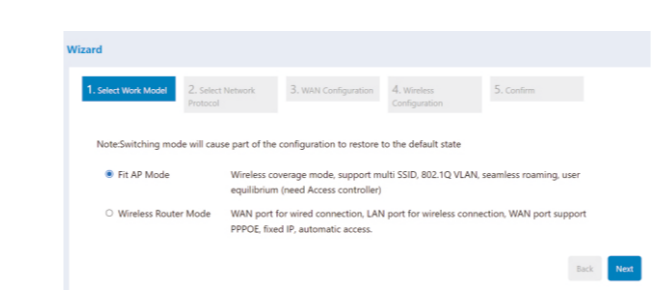


Configuration Method

Step 2. Please launch a browser such as Google Chrome or Firefox, type 192.168.1.88 into address bar and click on enter to get in the login page of wireless access point. The default login password is "admin".

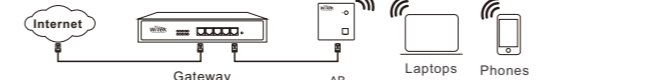


Step 3. After get in the management page, On the left side menu, please go to [Wizard] to setup the access point.



Configuration Method

Step 4. Select the appropriate operation mode and follow the instruction of wizard to finish the settings. If already exist a Router in your network, please choose, Fit AP mode; if not, you can choose Wireless Router mode Notice: if you do a reset, AP will recovery to Fit AP mode.



• Fit AP Mode Default Login IP: 192.168.1.88 admin/admin



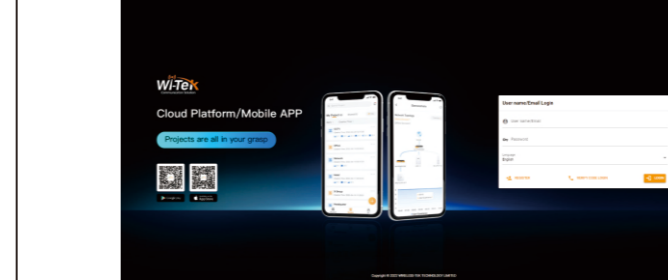
• Wireless Router Mode Default Login IP: 192.168.11.1 admin/admin

Cloud Management Settings

Step 1. Launch your web browser then enter <http://cloud2.wireless-tek.com> in the address bar.

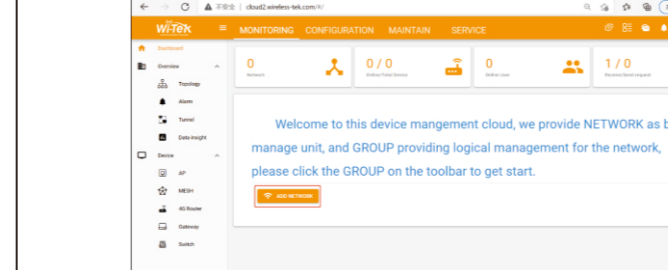
Step 2. Register an account password by user name or email.

Step 3. log in to the cloud account with the account password after registration.



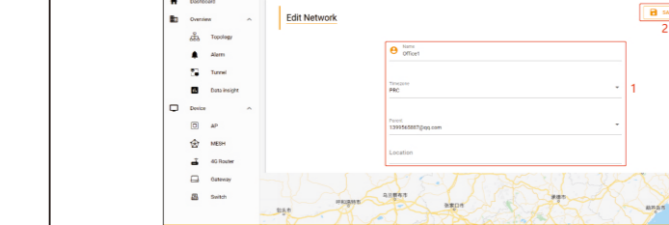
After the login is successful, the steps to bind the device on the cloud account are as follows:

(1) Click ADD NETWORK

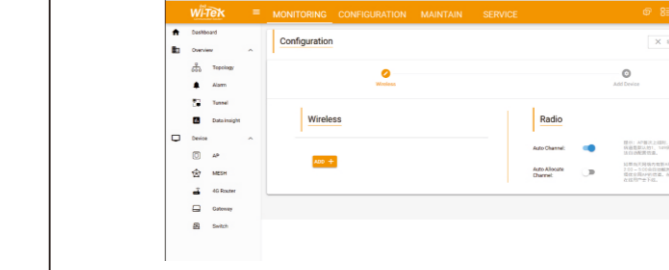


Cloud Management Settings

(2) Fill in the group name and location, click save.

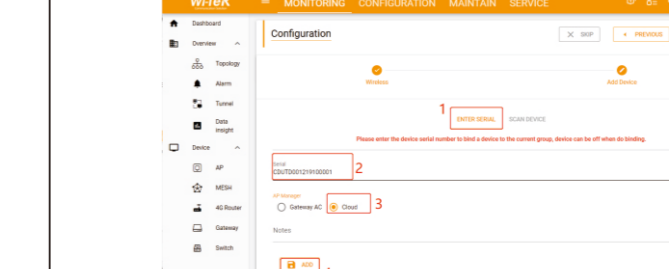


(3) And click next.



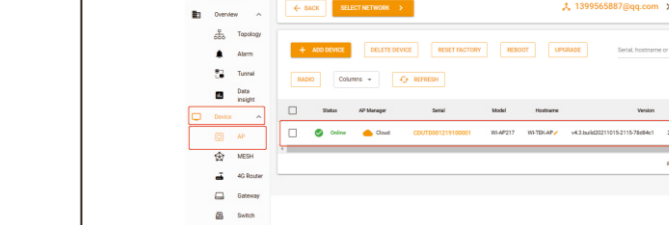
(4) Enter serial number, click ADD to create and click FINISH, the configuration is complete.

Note: The 17-digit SN code of the Add device is shown on the sticker on the back of the device.

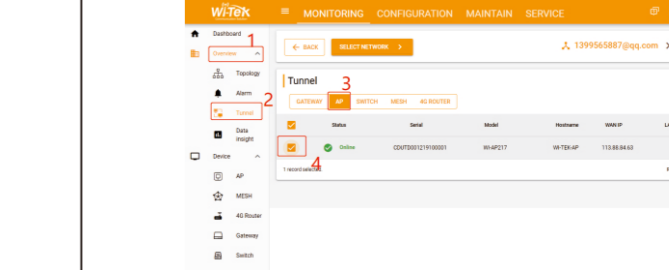


Cloud Management Settings

(5) In the relevant device options, you can see the bound device information.



(6) Click Tunnel, Select binding device type, click EWEB to log in to the device.



Warranty Card

Username	
Address	
Telephone No.	
Purchase Shop	
Purchase Address	
Purchase Time	
Serial No.	
Dealer Signature	

• If the product defects within three months after purchase, we will provide you a new product of the same model.
 • If the product defects within the three-year warranty period, we will provide the professional maintenance service.
 • Proof of purchase and a complete product serial number are required to receive any services guaranteed as part of the limited warranty.
 • Any other defects that are not caused by workmanship or product quality, such as natural disaster, water damage, extreme thermal or environmental conditions, sticker damaged, warranty card losing will disqualify the product from limited warranty.



Wireless-Tek Technology Limited
 Address: Biaofang Technology Building 402, Bao'an street, Baoan District, Shenzhen City, Guangdong, China
 Website: www.wireless-tek.com
 Tel: 86-0755-32811290
 Email: sales@wireless-tek.com
 Technical Support: tech@wireless-tek.com